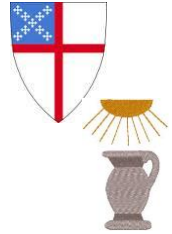




**The Venerable
Bede**

St. Bede Episcopal Church
Port Orchard, WA



Our Newsletter

"The Tidings"

January/February 2018

Special Events

Bible Study on Acts
Starting on Monday, January 22:
1pm – 2:30pm for 12 weeks
in Parish Hall

Grief Group
Starting on Wednesday, January 24:
3-5pm for 13 weeks
in Parish Hall

Bible Study on Wisdom
Wednesdays, January 24, 31 and February 7
6:45pm – 7:45pm
in Parish Hall

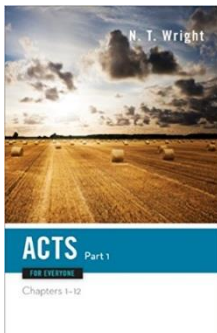
ANNUAL MEETING
Sunday, January 28
11:30am

Bible Study at St. Bede's

Winter and Spring 2018



Episcopalian Christians love the Bible. We love reading it in church together. We also love studying the Scripture in groups to learn how it applies to our lives, our relationships, our work, and our service to the community. While there are a lot of different formats for Bible Study, you might come across in Episcopal churches, usually you will find them to: be open-minded, find truth in both literal and figurative readings of the Bible, and seek to understand the history and culture that shaped the story. St. Bede's follows this approach to our Bible Study programs. Bible Study groups meet in the St. Bede's Parish Hall.



The Book of Acts (Part 1): A 12-week Study

Mondays from 1:00pm-2:30pm in the Parish Hall

Dates: January 22, 29, February 5, 12, 19, 26, March 5, 12, 19, 26 (skips Easter Monday), April 9, 16

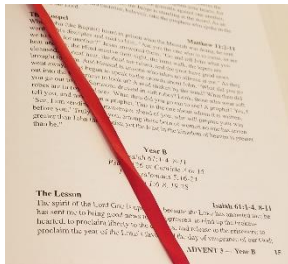
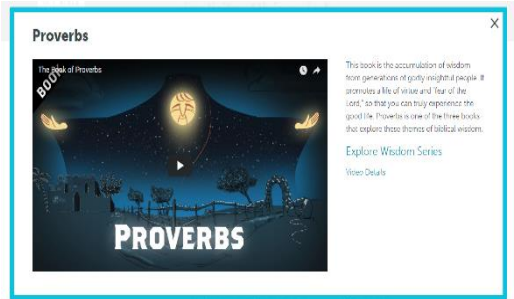
Join in studying the book of Acts with St. Bede's Episcopal Church. We will use Bishop Tom Wright's "[Acts for Everyone](#)" Study Guide to shape our conversation. While folks can drop in on individual sessions, be sure to have read the selected Scripture in advance. Contact [the Rev. Arienne](#)

Wisdom Literature

Wednesday Evenings from
6:45pm-7:45pm

Dates: January 24, 31 and
February 7

Join a video-based study of
Wisdom literature at St.
Bede's. We will use [The Bible
Project](#)'s videos and
conversation guide. *Contact*
[Teresa](#)



Lectionary Based Bible Study and Eucharist

Wednesday mornings from 11:00am to Noon

Dates: All Wednesdays, except Church holidays

Join in reading and studying the [Scriptures for Sunday](#).

Each week we study the following Sunday's Lessons.

Formats vary and include: conversation, lectio, art

response among others. After the Scripture study, we

celebrate an informal Eucharist around the Table.

Contact [the Church Office](#)

ANNUAL MEETING
Sunday, January 28
at 11:30 am



**SHROVE TUESDAY
PANCAKE SUPPER**

Tuesday, February 13 at 5pm
in the Parish Hall

ST. BEDE FAMILY JANUARY BIRTHDAYS



Denise Cameron
Jean Chynoweth
Justin Brideau
Juanita Fox
Kelly Hargrave
Pat McGuire
Selena Clements
Arthur Ferguson

ST. BEDE FAMILY FEBRUARY BIRTHDAYS

Pam Rowland
Lydia Thomassen
Mary Ann Balyeat
Aidan Anderson
Sarah Yergin
James Clements
Phyllis Harris
Amy Anderson
Rebecca Evenhus
Matthew McFarland

Edna Erfe
Jonathan Wanliss
Ainsley Anderson
Glen Yergin
Cyndy Dillon
Allan Anderson
Jaymeson Saling



Wednesday, February 14
Services at 12 noon and 7pm



PARISH NURSES

Disaster Preparedness #2



This is January and month 2 of your preparedness information. We are in the period of winter storms and can be isolated any day. Now is the time to start getting prepared if you have not already done so.

Month Two: (All food and water items are for one person only.)

*2 cans ready to eat soup,
1 can fruit, 1 large can juice, 1 can vegetables,
1 box high energy snacks, 3 rolls paper towels,
a first aid kit with an extra pair of glasses in it,
antacid, a sewing kit, liquid dish soap,
household chlorine bleach (unscented) with medicine dropper for
water treatment,
alternative powered radio and extra batteries for radio & flashlights;
wrench to turn off utilities, waterproof container for important
papers, large plastic food bags,
1 box heavy duty garbage bags with ties.*

Place a pair of sturdy shoes, flashlight, whistle and work gloves in a plastic grocery bag and tie the bag to your bed frame.

*Photocopy important papers and store safely.
Make sure everyone knows how to locate and shut off the gas and
water valves.*



BE PREPARED NOT SORRY!

Ken and Mary Hulet, Parish Nurses

EPISCOPAL CHURCH WOMEN

A lovely Christmas Party was held at Sara and Glen's new and beautiful abode! We had a delicious pot luck lunch and a great gift exchange. Fun and laughter was enjoyed by all. Alas only 11 folks participated, even though the entire congregation is welcome. Try it next Christmas, you will have good fun.



I am looking forward to 2018 with our **new President, Mary Ann Balyeat**. Come and join in, see what is going on and help raise funds for much needed items for our church. A good and prosperous year to all.

Anne Liepman, President, ECW

FAMILY KITCHEN



December was a busy month for all of us, but we managed to provide a delicious and nutritious meal for Family Kitchen. **Everyone loved our Spiral Ham, Scalloped Potatoes, Salad and a Pudding**

Parfait for dessert. All of us were disappointed that we only had 34 folks to dine on our food. But, they loved it. **We sent home lots of leftovers and there was enough food left for the volunteers to enjoy.** This benefit is totally allowable and much appreciated by all. We cooked it, and we want to taste it! Some participating churches feed their cooks and helpers before the dinner is served. Great!



On January 22, we will have Roast Beef, Mashed Potatoes, Gravy, Salad and Costco cakes for dessert.



This will be my final and grand finale. I know folks will enjoy the feast! See you in church,

Anne Liepman, Chair, SK Family Kitchen.

OUTREACH COMMITTEE



Dear Church Family,



Your Outreach Committee met and allocated money to Helpline, the Coffee Oasis, Chuckwagon Meals on Wheels, and the Diocese of Los Angeles for those affected by the fires.



We are currently working on collecting items for St Vincent’s to provide warm clothes, food, and aid for the homeless. Thank you for all our donations including the Giving Tree.

Helping those who are less fortunate is clearly one of Jesus’ commands, and I think our Church tries very hard.

February is going to be a busy, busy month with the Souper-Bowl Sunday, Sarah’s BIG Birthday, and Soapy Sunday.

More about these later.

Blessings, Your Outreach Committee.



DAUGHTERS OF THE KING

Daughter of the King had a successful Movie Matinee on Saturday, January 13, with the showing of “The Shack”.



Popcorn was served, and the movie promoted good discussion. **Barb O’Hearn**

SOUP SUPPERS and PROGRAM
Will start on Wednesday, February 21 at 6pm
in the Parish Hall.
These will last for 4 weeks
– ending on Wednesday March 14

TIDINGS

Published monthly by

St. Bede Episcopal Church

1577 SE Lider Rd.

P.O. Box 845

Port Orchard, WA 98366

360-876-1182

bedeschurch@gmail.com

www.stbedeschurch.org

The Rev. Arienne Davison - Vicar

bedesvicar@gmail.com

Services:

Sundays -

**8:00 AM - Holy Communion
without Music**

**10:00 AM - Holy Communion
with Music, and
Sunday School**

Wednesdays -

**11:00AM - Holy Communion
Bible Study and Prayer**



St. Bede Episcopal Church

P.O. Box 845

Port Orchard, WA 98366

**In the love of Jesus Christ, St. Bede joyfully welcomes you
and seeks to serve and to nurture spirituality in all.**